

**YOUNG
CAMDEN
FOUNDATION**



Department
for Education



**CAMDEN HOLIDAY
ACTIVITIES AND FOOD
PROGRAMME
(HAF) 2022**

www.youngcamdenfoundation.org.uk
Registered charity no: 1172314

Contents

1. Statement from YCF CEO.....	1
2. About the Holiday Activities and Food programme nationally.....	3
3. An overview of HAF 2022 in Camden.....	5
4. The Camden Easter 2022 HAF Programme.....	8
5. The Camden Summer 2022 HAF Programme.....	12
6. The Camden Winter 2022 HAF Programme.....	17
7. HAF Camden 2022 Providers.....	21
8. Additional Partnerships in 2022.....	22
9. Contact Details.....	25



Statement from YCF CEO

We are delighted to present the 2022 summary report for the Holiday Activities and Food Programme in Camden.

Since 2021, Young Camden Foundation has been fortunate enough to be Camden Council's chosen delivery partner for this national programme, funded by the Department for Education. The programme provides nutritional food and enrichment activities to Free School Meal eligible children and young people across the three main holidays each year: Easter, Summer and Winter.



The Young Camden Foundation is a registered charity and membership organisation based in Camden, launched back in 2017. We work to support over 100 local charities and organisations in Camden, who, in turn, serve our community's children and young people. YCF works with their members, building capacity and innovative partnerships, distributing grants and championing critical issues facing children and young people in Camden. YCF is part of the national Young People's Foundation Trust model, and emerged as a result of significant changes and cuts to the youth sector nationally since 2010.

The need for the HAF programme in Camden is clear. There are well over 7000 children and young people across the London Borough of Camden that are eligible for Free School Meals, and therefore among the most vulnerable in our community. At the same time, 1 in 3 children and young people live in relative poverty in our community, and the aftershocks of the pandemic combined with the cost of living crisis means need in Camden is increasing. I feel very personally invested in this programme, having grown up as a child on Free School Meals, and remembering how challenging holidays could be for families like mine facing multiple financial challenges.

We are proud that, since 2021, HAF Camden has provided over 58,000 meals to over 8,600 places to children and young people in Camden, enabling fun and free activities for communities who may not have otherwise been able to access such programmes. The programme in turn provides support and childcare for families in Camden over the holiday period.

The HAF programme in Camden would simply not be possible without our incredible providers, the youth clubs, community centres, sports clubs, arts organisations, schools and more that make our community so culturally rich and exciting. These providers, many of whom are also Young Camden Foundation members, work tirelessly to ensure participating children and young people get the most out of the HAF programme, whether through organising trips, enabling opportunities that simply would not be possible anywhere else, or through partnering up with corporate neighbours to enable donations of gifts or time.

Our HAF Camden providers do this work in increasingly challenging financial contexts where long term funding has dried up and is under threat, and we are proud to work with them on this important programme.

We are glad that the HAF programme is guaranteed nationally until the end of next year, and we hope that the offer may be made on a more permanent footing, to ensure our children and young people continue to receive the investment they need to grow and thrive in our community.

Daisy Srblin, CEO of the Young Camden Foundation, March 2023

A message from Martin Pratt, Camden Council's Deputy Chief Executive and Executive Director (Supporting People)



This has been a challenging time for many families in Camden, and with nearly a third of pupils on free school meals, it's vital for the Council and our partners, including the Young Camden Foundation, to do as much as possible to support children and families. We know that the HAF programme has helped children and young people to get the most out of the school holidays and help ease some pressure for families who need this support. I'm particularly pleased that providers also make arrangements to welcome children with special educational needs and disabilities to the programme.

March 2023

About the Holiday Activities and Food Programme Nationally

The Holiday Activity and Food Programme, widely known as HAF, is a national programme that supports children and young people eligible for Free School Meals (FSM) during Easter, Summer, and Winter school holidays. It provides free access to physical and enriching activities, nutritional education, and a healthy hot meal during the day. Each local authority receives funding from the Department for Education to deliver the HAF programme in their borough.

The central government funding does not enable more than around a fifth to a quarter of FSM eligible children and young people to access the programme.

In the London borough of Camden, the programme is managed and coordinated by the Young Camden Foundation. We work in partnership with Camden resident children and young people aged 5-16 years eligible for FSMs, whose families are invited to book free HAF places, to engage in fun educationally and physically enriching, together with some nutritional education. In addition, every participant will receive a healthy, delicious hot meal on the day prepared at the venue or prepared and delivered centrally by a Camden food provider.

The Camden HAF programme launched in 2021 and has delivered six HAF programmes at the end of 2022.

- | | |
|---------------------------|---------------------------|
| 1. Camden HAF Easter 2021 | 4. Camden HAF Easter 2022 |
| 2. Camden HAF Summer 2021 | 5. Camden HAF Summer 2022 |
| 3. Camden HAF Winter 2021 | 6. Camden HAF Winter 2022 |

To date, Camden's HAF Programme has provided over 58,000 meals to Free School Meal eligible children and young people across Camden, including over 900 SEND-needs students, providing thousands of hot, nutritious meals and free access to physical and enriching activities and nutritional education. During the Summer of 2022, we were proud to reach 31% of all Free School Meal eligible children and young people in the borough through this scheme, and on average HAF Camden has reached an average of 21% of all FSM eligible children and young people in Camden. To date, HAF Camden has worked with over 40 providers, across over 50 venues across the London Borough of Camden.

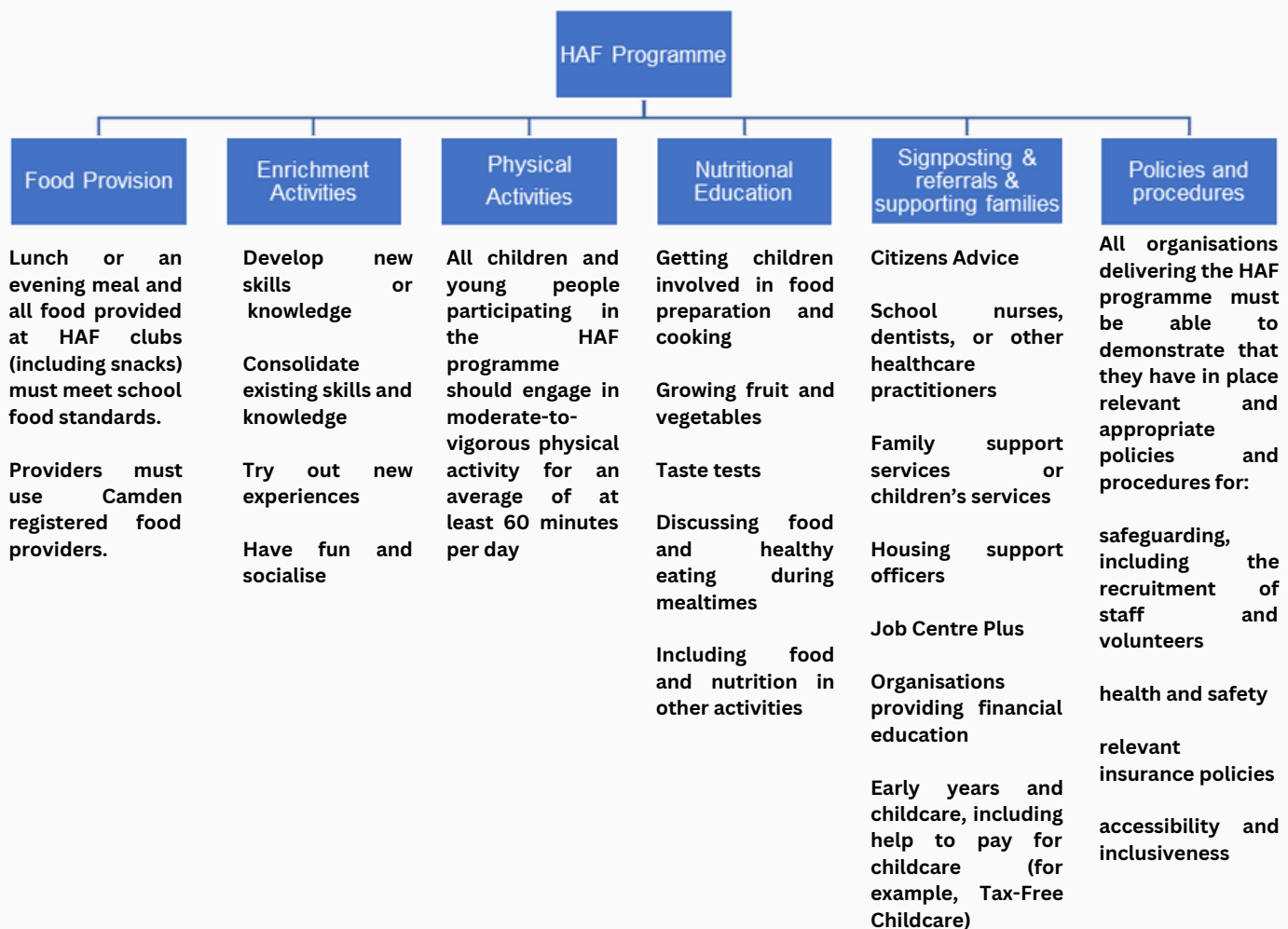
Currently, over 7,600 children in Camden are eligible for Free School Meals, which is likely to increase with the current rising living cost crisis. The HAF Programme is confirmed nationally to continue until 2024 Winter school holidays.

Aims of the HAF programme

There are many benefits for children who attend the HAF programme. We expect all HAF providers to ensure a high-quality experience that will result in children:

1. receiving healthy and nutritious meals
2. maintaining a healthy level of physical activity
3. being happy, having fun and meeting new friends
4. developing a greater understanding of food, nutrition and other health-related issues
5. taking part in fun and engaging activities that support their development.
6. feeling safe and secure
7. getting access to the right support services
8. returning to school feeling engaged and ready to learn.

The HAF programme also provides support to Camden families through additional opportunities such as additional cooking programmes, signposting of information and support, such as health services or employment and education opportunities, and in generally raising awareness of the community resources and spaces in Camden, which residents may not otherwise be familiar with.



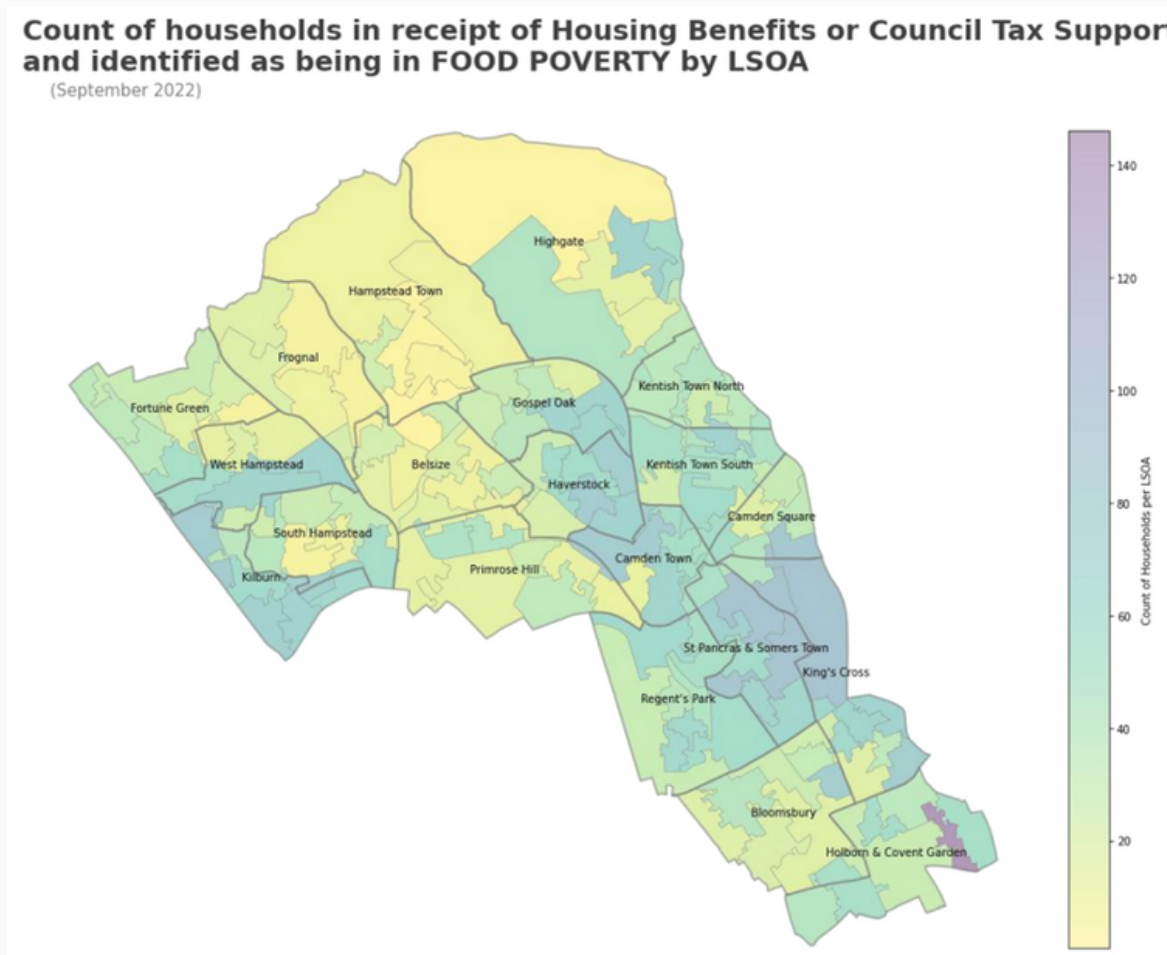
An Overview of HAF in Camden

After completing three nationwide HAF programmes in 2021, the Department for Education announced that the Holiday Activity and Food Programme would continue for three more years, from the 2022 to the end of the 2025 financial year, providing longer term financial stability to support vulnerable children and young people during school holidays. For the financial year 2022 to 2023, of the allocation received from the Department for Education, HAF Camden distributed £707,326.54 in Camden to deliver the HAF programme for six weeks during Easter, Summer and Winter holidays.

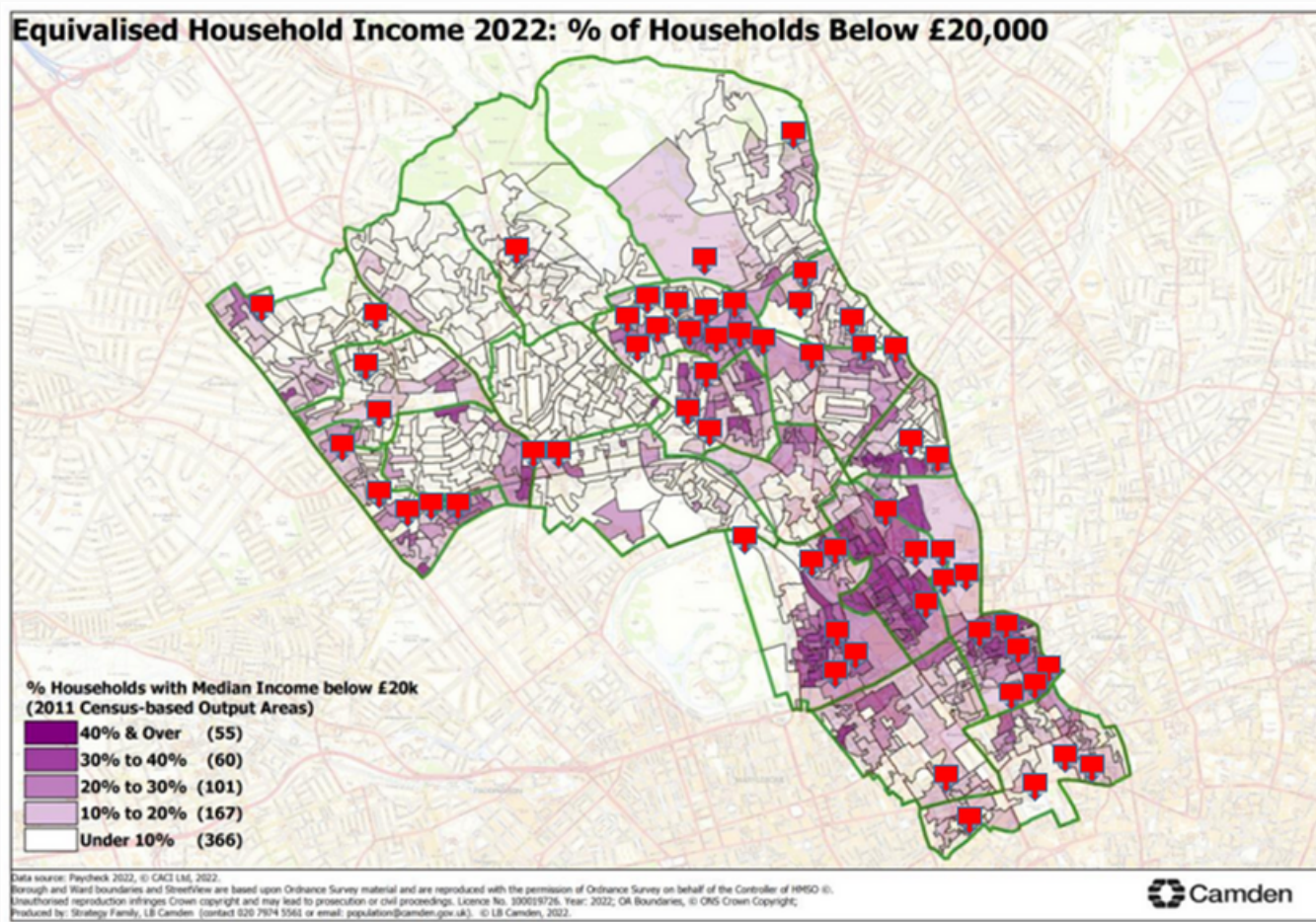
Planning for the Easter 2022 HAF programme commenced with Young Camden Foundation and Camden Council focusing on enhancing the quality of the Camden HAF programme, building on extensive learnings, especially around raising awareness of the offer amongst Camden’s families, growing trust in the process amongst HAF providers and offering greater tailored support for SEND needs children and young people.

There are well over 7800 children and young people across the London Borough of Camden that are eligible for Free School Meals, and therefore among the most vulnerable in our community. At the same time, 1 in 3 children and young people live in relative poverty in our community, and the aftershocks of the pandemic combined with the cost-of-living crisis means need in Camden is increasing.

The following ward level map demonstrates food poverty levels via a heat map as of September 2022:



The following map shows a heat map of Camden households with household income of below £20,000 per annum, with a on overlay of HAF venues over the course of 2022, demonstrating the ways in which HAF provision in Camden is tailored to fit local need.



Both maps produced by LB Camden 2022 Cost of living: Borough and ward map data packs, accessible [here](#).

Overall, the HAF 2022 programme in Camden offered a total of 4726 places to children and young people in 2022.

Of these, 1430 children and young people during the Easter programme, 2395 during the Summer programme and 901 during the Winter programme, meaning an average of 21% of FSM eligible children and young people in Camden were able to participate on the programme overall.

73% of participants were primary aged children and 27% secondary aged. 14% of the participating children had SEND needs, many of which required tailored one to one support which the programme was able to offer.

Over 26,000 meals were served across over 50 venues and 40 providers, across 15 of a total number of 18 wards in the London Borough of Camden.

In total, £707,326.54 was distributed across the borough of Camden as part of the HAF Programme over the course of the year.

HAF 2022 in Camden table overview

	Easter 2022	Summer 2022	Winter 2022
Total grant money spent	£139,085.81	£476,926.95	£92,982.96
Number of children supported	1430	2395	901
Primary school age	1014	1784	643
Secondary school age	416	611	258
Number of SEND children supported	274	276	108
Total number of meals provided	5422	17388+	3604
Percentage of FSM children supported in Camden (7617)	19%	31%	12%
Total number of HAF providers	27	31	19
Total number of HAF venues	43	47	27

HAF 2021 table overview for comparison

	Easter 2021	Summer 2021	Winter 2021
Total grant money spent	£55,190.70	£602,211.67	£106,972.11
Number of children supported	815	2157	918
Primary school age	540	1503	687
Secondary school age	275	654	231
Number of SEND children supported		238	61
Total number of meals provided	2601	26740	2802
Percentage of FSM children supported in Camden (7617)	11%	28%	12%
Total number of HAF providers	14	37	18
Total number of HAF venues	28	54	30

The Camden Easter 2022 HAF Programme

The Easter 2022 programme ran from 4-15 April 2022.

The HAF Easter programme supported 1430 children and young people, in other words, 19% of all children and young people eligible for FSMs in Camden.

5422 meals were served across 43 venues and 27 providers delivered the Easter 2022 programme across two weeks.



Action Youth Boxing Intervention



Learning and Development Centre

7617

Children and young people eligible for FSM in the Camden Borough 21/22

1430

Unique participants who attended Easter HAF

5422

Healthy meals served during the Easter HAF programme

19%

of children and young people eligible for FSMs in the Camden borough booked

	Primary-aged	Secondary-aged
FSM-eligible / Non-SEND	804	334
FSM-eligible / SEND	94	20
Non-FSM-eligible / non-SEND	10	8
Non-FSM-eligible / SEND	106	54
TOTAL number of HAF-funded attendees	1014	416
Other – free*	0	0
Other – paid-for*	0	0
TOTAL number of attendees	1014	416

*Department for Education explanation of the groups above:

- FSM- eligible = school aged children from reception to year 11 (inclusive) who receive benefits-related free school meals.
- Non-FSM eligible = any other HAF-funded children and young people attending in accordance with the 15% tolerance as per the grant determination letter.
- SEND - including total numbers attending holiday clubs, whether:
 - universal, or
 - targeted within universal settings, or
 - specialist provision
- Secondary aged - including any 16+ SEND attendees in secondary-aged numbers
- Other – free –numbers for attendance funded by other sources
- Other – paid-for –numbers for places paid-for by parents/carers



'The boys loved the Stage Academy they learnt a new song and dance routine, which they have not stopped performing at home.'

Parent, Kentish Town Community Centre

'My children loved the HvH arts programmes . they had the most fun and they learned some skills in photography art and dance'

Parent, HvH Arts

As the HAF programme is a constantly evolving programme nationally, several learnings were taken forward from the Easter programme to Summer regarding targeting engagement with secondary schools, developing enrichment programmes that develop young people's employment prospects down the line, encouraging HAF providers to become Ofsted registered (not currently a DfE requirement), and sourcing affordable and Camden-based catering.

The HAF Easter programme in Camden featured 27 provider organisations working from 43 community and school venues across the London Borough of Camden. The table on the next page indicates the breadth of provision geographically over the Easter programme.

Providers included specialist sports providers including Action Youth Boxing, Bloomsbury Football Club and Platform Cricket, specialist arts organisations including HvH Arts, SEND specialist organisations such as Centre 404, early years specialists such as the PACE Consortium, community green spaces such as Kentish Town City Farm and Calthorpe Community Garden, and other important community groups, such as Somali Youth Development Resource Centre and Kentish Town Community Centre.

Organisation name	Venue	Number of venues	Total number of children	Number of primary school children	Number of secondary school children
Action for Children	3 Cubitt St, London WC1X 0UJ	1	36	36	0
Action Youth Boxing Intervention	Rhyl Primary School, Rhyl St, London NW5 3HB	1	40	30	10
Ball Out of the Box	UCL Academy	1	40	20	20
Ball Out of the Box	Hampstead School	1	40	20	20
Ball Out of the Box	William Ellis (base at UCL 2nd week)		40	20	20
Bloomsbury Football	Kings Cross Academy	1	40	30	10
Bloomsbury Football	Acland Burley School- Group 1	1	40	20	20
Bloomsbury Football	Acland Burley School- Group 2		40	30	10
Calthorpe Community Garden	258-274 Grays inn rd, kings cross	1	25	25	0
Camden Sports Development Centre	Talacre Sports Centre Centre 404, 404 Camden Road, N7 0SJ	1	40	30	10
Centre 404		1	7	2	5
Dragon Hall	17 Stukeley Street, WC2B 5LT	1	37	12	25
Fit for Sport	Brookfield Primary	1	40	40	0
HVH Arts	Carlton Primary School	1	80	40	40
Kentish Town City Farm	1 Cressfield Cl, London NW5 4BN	1	12	6	6
Kings Cross Brunswick Neighbourhood Association (KCBNA)	51 Argyle St, London WC1H 8EF	1	30	0	30
KTCC	Kentish Town Community Centre	1	72	36	36
Learning and Development Centre	71 Kingsgate Road, London, NW6 4JY	1	24	19	5
Legacy Sports	Fleet Primary School	1	70	70	0
Legacy Sports	Argyle Primary School	1	70	70	
Maze Academy	Rhyl Primary School, Rhyl St, London NW5 3HB	1	50	50	0
Newham Futsal Club	West Hamstead Primary School	1	60	60	0
Our Parks	St Mary primary school - Kilburn	1	40	40	0
PACE	Across 10 venues	10	269	269	0
Platform Cricket	Somers Town Community Sports Centre	1	30	30	0
Pro Touch SA	Christopher Hatton Primary School 38 Laystall Street, London, EC1R 4PQ	1	70	50	20
Pro Touch SA	Royal recreational Centre	1	30	25	5
Pro Touch SA	Netley Campus, 74 Stanhope St, London NW1 3EX	1	70	50	20
QCCA	DOME Youth club- 170 Weedington Rd, London NW5 4NU	1	40	25	15
SHAK	ARC Youth Club	1	20	10	10
Store Project	Rochester Square, 1Rochester Square, London NW19SD	1	15	0	15
SYDRC	N1 Centre	1	45	15	30
YMCA	112 Great Russell St, London WC1B 3NQ	1	40	40	0
Youth Early Help	1. Netherwood Youth and family Hub, 5 Netherwood Street, NW6 2QU - North Hub 2. Ingestre Community Centre, Ingestre Road, London NW5 1UX - Central Hub 3. Somers Town Youth Centre, 134 Chalton Street, London, NW1 1RX - South Hub	3	90	0	90
Total numbers		39	1562	1180	382

The Camden Summer 2022 HAF Programme

The Camden Summer HAF 2022 ran from 27 July -31 August, covering 4 weeks of the summer holidays. Providers received funding to offer a four-day programme, four hours each day for four weeks during the summer school holidays—64 hours total. Providers were free to choose any four weeks between the six weeks of the summer holidays, and the YCF team worked hard to ensure there was a fair distribution of provision across the five weeks.

32 providers secured HAF Summer funding, with two unsuccessful applications. The Summer of 2022 introduced a registration period and a registration cut-off date to ensure providers were able to secure the number of bookings they estimated. Where this was not possible, spaces were then distributed across other providers.

The HAF Summer programme supported 2395 children, meaning 31% of all FSM eligible children and young people in Camden were able to participate on the programme.

74% of participants were primary aged children and 26% secondary aged. 11% of the participating children had SEND needs, many of which required tailored one to one support which the programme was able to offer.

Over 17,300 meals were served across 47 venues and 31 providers. The HAF Camden Summer programme operated across 13 Camden wards.

Providers included organisations across the whole of the borough including organisations and venues in the sometimes underrepresented parts of the borough, such as the west and the north.

Summer providers included schools (such as Torriano Primary School), new providers and YCF partners such as London Zoo and the British Library. Enrichment activities ranged from trips, dancing, drama, music, singing, art craft, working with animals, music, photography, junk modelling, and gardening.

Young people participating on the programme also went out trips to Thorpe Park, Ice skating, Crazy Golf, Margate, London Dungeon, Boat trips, Go carting, Inflatable LAND, and Paint Balling. We have noticed young people aged from 13-16 are especially fond of outdoor trips and the registrations and attendances are high on those activities.

Key outcomes of the Summer 2022 HAF programme

- Total number of individual children supported = 2395
- Total number of meals provided = 17388+
- Total number of HAF providers= 31
- Total number of HAF sites=47
- Percentage of FSM eligible children supported= 31%

‘My daughter loved this experience, she learnt lots about animals and how to care for them, information about the different types of jobs involved in London Zoo and it has also given her an interest in working as a animal photographer! She met new people her age and thoroughly enjoyed her time.’

Parent, London Zoo



Kentish Town Community Centre



STORE Projects

	Primary-aged	Secondary-aged
FSM-eligible / Non-SEND	1429	459
FSM-eligible / SEND	148	66
Non-FSM-eligible / non-SEND	190	73
Non-FSM-eligible / SEND	17	13
TOTAL number of HAF-funded attendees	1784	611
Other – free	0	0
Other – paid-for	0	0
TOTAL number of attendees	1784	611

‘My child learnt a new skill, she really enjoyed the boxing, cooking and the staff!’

Parent, Calthorpe Community Garden



Calthorpe Community Garden

Summer Providers

Organisation name	Venue	Number of venues	Total number of children	Number of primary school children	Number of secondary school children
Action Youth Boxing Intervention	Rhyl Primary School, Rhyl St, London NWS 3HB	1	50	35	15
Ball Out of the Box	The UCL Academy, Adelaide Rd, London NW3 3AQ	1	40	15	25
Ball Out of the Box	Hampstead School, Westbere Rd, London NW2 3RT	1	40	20	20
Bloomsbury Football	Kings Cross Academy	1	40	30	10
Bloomsbury Football	Acland Burghley School	1	40	25	15
Calthorpe Community Garden	258-274 Grays Inn road, Kings cross, Wc1x 8lh	1	25	25	0
Camden Sports Development Team	Talacre Community Sports Centre Dalby Street, London, NWS 3AF	1	40	30	10
Centre 404	404 Camden Rd, London N7 0SJ	1	7	2	5
Dragon Hall	17 Stukeley Street, London WC2B 5LT	1	31	14	17
Global Generation	The Story Garden, Ossulston Street, Camden, London, NW1 1DF	1	25	15	10
HVH Arts	Rhyl Community School, 196 Grafton Road, NWS 4AX	1	90	45	45
KCBNA and British Library	Marchmont Community Centre, 62 Marchmont Street	1	25	0	25
Kentish Town C.E Primary school	Kentish Town CE School Islip Street London NWS 2TU	1	80	80	0
Kentish Town City Farm	Kentish Town City Farm, 1 Cressfield Close, NWS 4BN	1	12	6	6
KTCC	17 Busby Pl, London NWS 2SP	1	35	35	0
Learning and Development Centre	71 Kingsgate Road, London, NW6 4JY	1	25	18	7
Legacy Sports	Fleet primary school, Fleet Road Hampstead, NW3 2QT	1	50	50	0
Legacy Sports	Argyle Primary school	1	40	40	
London Zoo	London Zoo, Regents Park, NW1 4RY	1	12	0	12
Maiden Lane Community Centre	156 St Pauls Crescent London NW1 9XZ	1	16	8	8
Maze Academy	Kentish Town Congregational Church, Kelly St, London NW1 8PH	1	35	35	0
Moving waves	St Pancras Community Centre	1	40	30	10
Old Diorama	Old Diorama Arts Centre, Regents Place, 201 Drummond Street, Triton Square, NW1 3FE	1	25	20	5
Our Parks	St Mary's C Of E Primary School:	1	45	45	0
PACE Consortium	10 venues	10	335	225	110
Platform Cricket	Somers Town Community Sports Centre 134 Chalton Street, NW1 1RX	1	30	30	0
Pro Touch SA	Christopher Hatton Primary School, 38 Laystall St, London, EC1R 4PQ	1	50	50	0
Pro Touch SA	Netley Primary School and Centre for Autism, Netley Campus, 74 Stanhope St, London, NW1 3EX	1	40	40	0
Pro Touch SA	Gospel Oak Primary School, Mansfield Road, London, NW3 2JB	1	50	50	0
QCCA	45 Ashdown Crescent London NWS 4QE	1	40	25	15
SHAK	109 Rowley Way, London NW8 0SW	1	25	8	17
Sidings	Sidings Community Centre, 150 Brassey Road, London NW6 2BA	1	28	28	0
STCA	2 Ossulston Street, London, nw1 1df	1	25	0	25
SYDRC	Ground floor Plimsoll Building, Handyside St, London N1C 4BQ	1	40	15	25
Torriano Primary school	Torriano Primary School, Torriano Avenue London NWS 2SJ	1	120	120	0
Youth Early Help	*Netherwood Youth and family Hub, 5 Netherwood Street, NW6 2QU - North Hub *Ingestre Community Centre, Ingestre Road, London NWS 1UX - Central Hub *Somers Town Youth Centre, 134 Chalton Street, London, NW1 1RX - South Hub	3	110	0	110
Total numbers		44	1651	1214	437

Department for Education visit to Camden HAF Programme

HAF Camden's Summer programme was chosen for a Department for Education visit, where the following positive feedback was shared:

"It was brilliant to see such an inspiring range of settings, and I was really impressed with each of the clubs. The leaders in each of the clubs were amazing – so creative and committed to making the clubs provide an excellent experience for the children and young people. The range of activities, especially for older children, was great, and it was amazing to see all the partnerships with local arts and sports organisations, farms, trips etc. I also thought the food in each of the clubs looked great, and the children all seemed very happy, calm and really interested in the activities. I think the clubs are really making such a positive difference to these children and their families, and it was great to meet some of the children and staff."

Civil Servant, Dept for Education

The Summer HAF venues visited by DfE:

- Torriano Primary school
- Kentish Town Community Centre
- HVH Arts
- Queens Crescent Community Association

Dragon Hall



KCBNA



The Camden Winter 2022 HAF Programme

The Winter programme ran from 19th December to 30th December 2022.

20 providers secured HAF Winter funding, with two unsuccessful applications. The HAF Winter programme in Camden faced the challenge of finding providers. This is because many community venues close for the Christmas holidays, but also because the cost of living crisis has meant that many venues have had to close in order to save on heating bills.

We experienced the same difficulty back in Winter 2021 programme; therefore, YCF will communicate with the Easter and Summer 2023 providers and prepare better to ensure Winter 2023 programme will receive enough providers to meet the demand.

The HAF Winter programme supported 901 children, meaning 12% of all FSM eligible children and young people in Camden were able to participate on the programme.



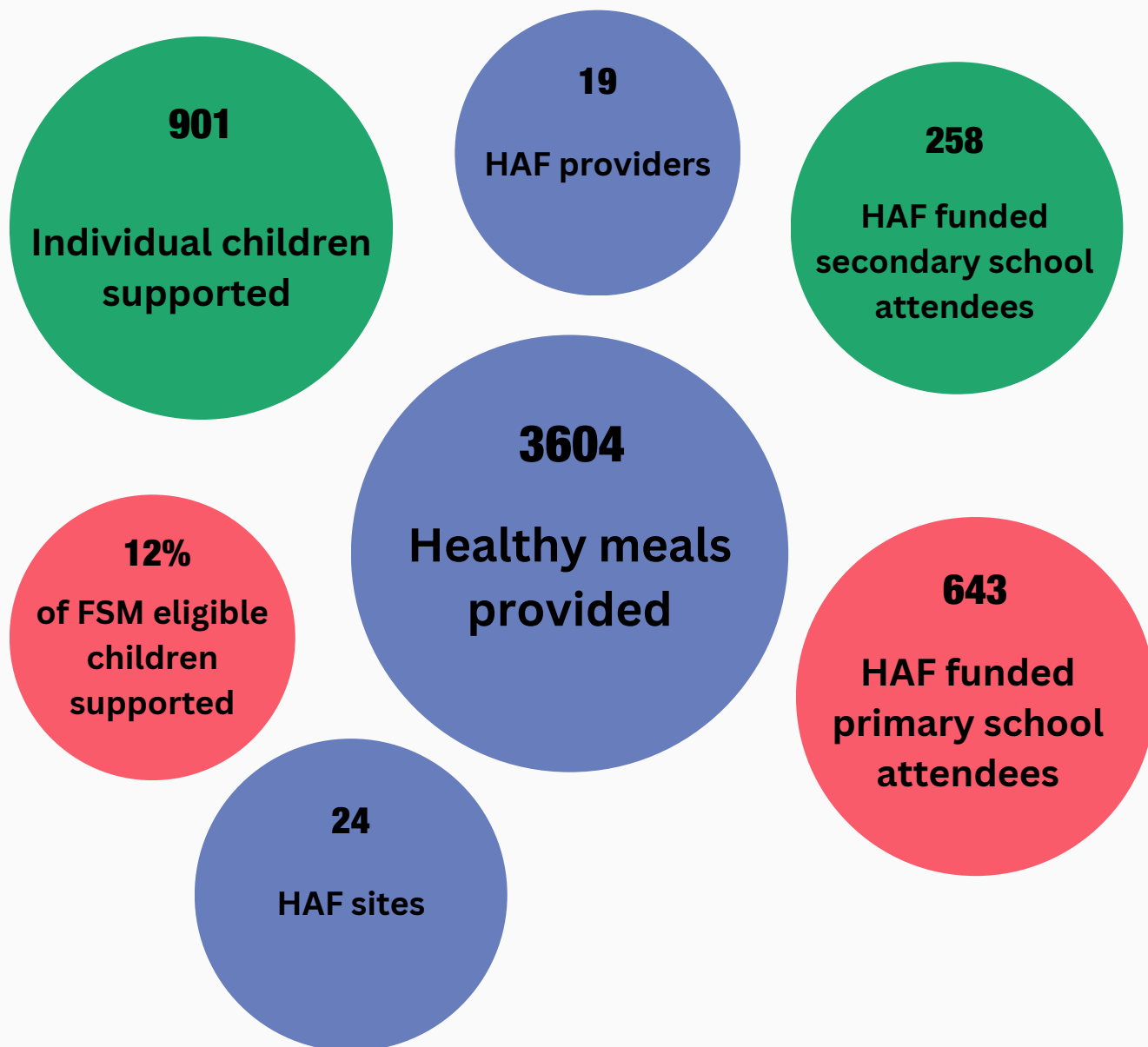
71% of participants were primary aged children and 29% secondary aged. 12% of the participating children had SEND needs, many of which required tailored one to one support which the programme was able to offer.

Over 3600 meals were served across 27 venues and 19 providers.

Providers included organisations across the whole of the borough including organisations and venues in the sometimes underrepresented parts of the borough, such as the west and the north.

The Winter programme saw an enhanced offer for SEND needs children and young people in Camden. London Inclusion Sports Academy (LISA), which works closely with Swiss Cottage School, opened a pilot programme for ten young people with complex needs and disabilities, a Winter HAF programme. LISA will extend their programme to further increase places for children and young people with SEND needs in future HAF programmes in Camden.

Key outcomes of the Winter 2022 HAF programme



	Primary-aged	Secondary-aged
FSM-eligible / Non-SEND	516	187
FSM-eligible / SEND	70	29
Non-FSM-eligible / non-SEND	51	39
Non-FSM-eligible / SEND	6	3
TOTAL number of HAF-funded attendees	643	258
Other – free	12	9
Other – paid-for*	27	6
TOTAL number of estimated attendees	682	273

*see Easter table for explanation on groupings



LISA

‘It really is so good being able to know our kids are safe, being fed and learning really good skills whilst on school holidays.’

Parent, HvH Arts

HvH Arts



London Zoo



KCBNA

‘The staff were so wonderful with the children, really supportive and enthusiastic.’

Parent, LISA



Winter Providers

Organisation name	Venue	Number of venues	Total number of children	Number of primary school children	Number of secondary school children
Bloomsbury Football	Acland Burghley School, NW5	1	10	5	5
Bloomsbury Football	Acland Burghley School, NW5		30	15	15
British Somali Community Centre	7-9 Crowndale Road, London NW1 1TU	1	40	20	20
Calthorpe Community Garden	Calthorpe community garden, 258-274 Grays Inn Road, Kings Cross, Wc1x 8lh	1	30	30	0
Camden Sports Development Centre	Talacre Sports Centre, London, NW5 4PG	1	40	35	5
Centre 404	Centre 404, 404 Camden Road, N7 0SJ	1	8	0	8
Holborn Community Association	Holborn House Community Centre, 35 Emerald Street, London, WC1N 3QW	1	20	20	0
HVH Arts	HvH Arts - 44 Ashdown Crescent - NW5 4QE Rhyl Kitchen School - Rhyl Street - NW5 London School of Mosaic - 181 Mansfield Road - NW3 TRA Hall - Lismore Circus - NW5	3	70	40	30
KCBNA	Kings Cross Neighbourhood Centre 51 Argyle Street London WC1H 8EF	1	30	0	30
Learning and Development Centre	71 Kingsgate Road, London, NW6 4JY	1	26	17	9
Legacy Sports	Fleet Primary school Fleet Road, Hampstead London, NW3 2QT	1	60	60	0
Legacy Sports	Argyle Primary School Tonbridge Street, London WC1H 9EG	1	40	40	0
LISA	Talacre Sports Centre, London, NW5 4PG	1	10	10	
London Zoo	ZSL London Zoo, Regent's Park, London, NW1 4RY	1	12	0	12
Maze Academy	Rhyl Community Primary School Rhyl Street London NW5 3HB	1	60	60	0
Netley Primary School	Netley Primary School and Centre for Autism, 74 Stanhope Street, London, NW1 3EX	1	60	60	0
Our Parks	Swiss Cottage Community Centre 19 Winchester Rd, London, NW3 3NR	1	40	40	
Our Parks	St Eugene de Mazonod Catholic Primary School Mazonod Ave, NW6 4LS	1	40	40	0
PACE Consortium	PACE Fairfield Playcentre Camden Square Playcentre PACE Fortune Green Playcentre Talacre Playcentre	3	160	101	59
Pro Touch SA	Gospel Oak Primary School	1	60	50	10
SHAK	SHAK 109, Rowley Way, London NW8 0SR	1	20	10	10
Youth Early Help	1. Netherwood Youth and family Hub, 5 Netherwood Street, NW6 2QU - North Hub (20) 2. Ingestre Community Centre, Ingestre Road, London NW5 1UX - Central Hub (20) 3. Somers Town Youth Centre, 134 Chalton Street, London, NW1 1RX - South Hub (30)	3	70	0	70
Total		24	866	653	213

HAF Camden 2022 Providers

We would like to take the opportunity to say a big thank you to all our HAF providers in 2022:

- PACE
- Bloomsbury Football Academy
- Centre 404
- British Somali Community centre
- London Inclusion Sports Academy
- Holborn Community Association
- Youth Early Help
- South Hampstead & Kilburn Community Partnership (SHAK)
- Pro Touch SA
- Maze Academy
- ZSL
- Legacy Sports
- Learning & Development Centre
- KCBNA
- Netley Primary School
- Our Parks
- HvH Arts
- Camden Sports Development Team
- Calthorpe Community Garden
- Kentish Town Community Centre
- QCCA
- Dragon Hall
- Kentish Town City Farm
- Platform Cricket
- Action Youth Boxing Intervention
- Somali Youth Development Resource Centre
- Somers Town Community Association
- Sidings Community Centre
- Ball Out of the Box
- Old Diorama Theatre
- Kentish Town C of E Primary School
- Moving Waves
- Global Generation
- Torriano Primary School
- Maiden Lane Community Centre & Camden Square Play Space
- Sapphire Community Group
- Happy Healthy Kidz
- STORE Projects

Additional Partnerships in 2022



Variety is a children's charity that provides practical support that makes an immediate difference to children and young people under the age of 19 who lives with disabilities and poverty. Their work helps give children and young people greater wellbeing, independence, social inclusion, mobility, and self-esteem, and allows them to live their best lives – no matter who they are.

During Winter 2022, Variety offered over 70 Christmas presents appropriate for a range of ages to the Camden HAF programme, collected from local corporates in the area, which were distributed to local organisations including YCF members and supplementary schools, the Learning and Development Centre and British Somali Community Centre.



Variety is working closely with the Young Camden Foundation to strengthen its support to children and young people in Camden through the 2023 Camden HAF Programme in the upcoming months, with a specific focus on children with additional needs.



The Felix Project is a London-based food redistribution charity set up in 2016 to tackle food waste and hunger. They rescue good, surplus food from the food industry that cannot be sold and would otherwise go to waste. This is high-quality and nutritious, including a high proportion of fresh fruit and vegetables, baked goods, salads, meat and fish. They collect or receive food from over 539 suppliers, including supermarkets, wholesalers, farms, restaurants and delis.



Felix Project sorts this surplus food and delivers it to almost 1000 front-line charities, primary schools and holiday programmes in London. The project has been working with HAF Camden since 2021.

YCF encouraged the 2022 Camden HAF programme providers to sign up with Felix Project to receive surplus food at their venues once during the Easter HAF programme and once a week for four weeks during summer HAF delivery time. Providers then shared these food items with their HAF participant families to take them home in sensitive ways.



Give. Help. Share.

Together We Can Fuel Children's Futures

Give. Help. Share. is a charity which aims to: GIVE children nutritious food; HELP families in crisis; and SHARE food knowledge for a healthier future.



During winter 2022, Give Help Share worked with the Camden HAF Programme distributing 1000 festive hampers which comprised of: a recipe card for a winter-spice rice bake; the required ingredients; nutritious child-friendly snacks; and a gift. The hampers were well-received by the families, and children were excited to try the unfamiliar snacks and open the gift.

Give Help Share's robust connections with other charities also enabled them to provide children with significant gifts such as quality reading books donated by the charity, GiveABook.



YCF would also like to give thanks to the King's Cross branch of Waitrose, which has donated funding each quarter, specifically to boost the HAF Programme in Camden.





Caterlink cooks healthy hot meals for over 90% of the Camden primary schools and some of the Camden secondary schools. Their menus are nutritionally balanced, full of local flavours and tailored to Camden school children and young people. They meet and exceed government guidelines and are trusted by the Camden local authority and the Camden school headteachers.

Extending their school meal provision to the school holiday period, Caterlink is an important food provider for the Camden HAF programme. The organisation picks popular dishes from their menu and plan and cook healthy hot meals freshly each day at their central school kitchens in Camden. The freshly cooked hot meals are then delivered to each HAF programme just before lunch by Neko Home Delivery.

Neko Home Delivery supports the Camden HAF programme by collecting hot meals from various Caterlink school kitchens and delivering them to HAF venues in Camden using a fleet of cargo bikes.



With their dedication to providing clean, green services to the community, the fleet includes electric and pedal-powered bikes to ensure their services are sustainable and eco-friendly, a vision shared by the Camden HAF programme.

The cargo bikes move swiftly and on time, avoiding the busy Camden traffic to ensure the hot meals (in recyclable boxes) arrived at venues in time to feed our young HAF participants. The Neko Home Delivery team maintains a good work partnership with Caterlink and Camden HAF providers.



Contact Details

Please contact the Young Camden Foundation team for more information regarding HAF at info@youngcamdenfoundation.org.uk

Find us on socials:



@young_camden



@youngcamdenfoundation



Young Camden Foundation



Young Camden Foundation

Watch our Camden Summer HAF 2022 video on YouTube:



